

Chapter 2

Eye Anatomy and Function

IN ORDER FOR YOU TO FULLY UNDERSTAND how Corneal molding works, you need to understand how your eye works. This basic knowledge will help you determine if GM is right for you. The primary purpose of your eye is to focus light. When the rays of light are not focused properly, you need glasses or contact lenses.

Your eye works very much like a camera. Light enters the eye through the cornea, the clear front surface or "window" of the eye. As the light passes through the cornea, it is bent or refracted. This bent light then travels through the pupil and into the lens. The lens acts to fine-tune the focus of light onto the retina. The retina turns the light energy into electrical impulses that travel along the optic nerve from the eye to the brain, where the image is interpreted.

On the following pages are a series of pictures and short descriptions of the various parts of the eye that will help you understand the vision process. They explain why vision is sometimes blurry, and how common vision disorders can be corrected.

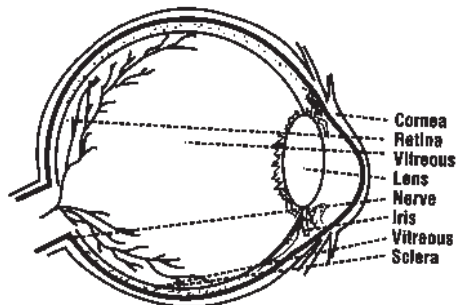


Diagram of Anatomy of the eye